

He says it's ideal for folks looking for a bigger backyard or a larger home.

"They're looking for something more than the Orleans/Barrhaven experience," said Anderson. "There's a certain closeness to nature that is available here."

Owners in this community must belong to the Water's Edge Community Association and pay an annual fee of \$180 to maintain common elements.

Homes built in this project are subject to a design review and the exteriors have to be finished in either wood, brick, stone or stucco. There's no vinyl siding in this project.

"It gives all the owners a certain comfort," explains Anderson.

In phase one of Water's Edge, there are nine waterfront lots still available.

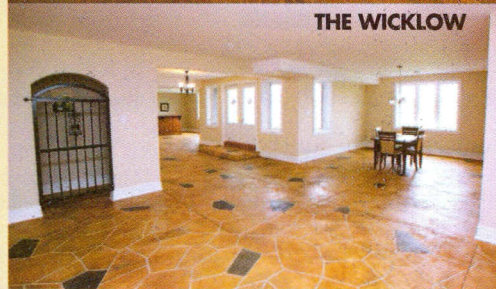
Phase two is expected to be released next summer and will have six waterfront lots and four regular lots.

However, Sunset Lakes Developments was just able to release 11 lots still within the master-planned Greely Village Centre but distinct from Water's Edge. This other phase of lots is being called Lakeview Walk and some of the homes will have a view of the Greely Centre Lake but within walking distance to Blue Water Lake. They will be located on the west side of Water's Edge Way and south of Parkway Road.

THE ROSA



THE WICKLOW



## Model homes

Three model homes in Water's Edge are available for viewing.

The Milletto, by Rideau Cliffe Developments Ltd., is an 1,800-square-foot bungalow with three bedrooms. It features an open concept and a gourmet kitchen. It's priced at \$529,900.

The Rosa is by Villa Homes and is a sprawling four-bedroom home with more than 2,900 square feet of space. This two-storey home starts at \$779,000.

The Wicklow, by Delgany Homes Ltd., starts at \$849,900 and is a waterfront bungalow with walkout basement. This 2,500-square-foot home includes a theatre media room and a wrought iron balcony between the master bedroom and the kitchen.

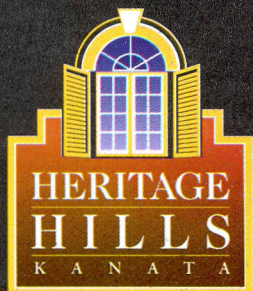
To visit the three models take Hwy. 31 south and turn left on to Parkway Road. Make a right on to Water's Edge Way and then a left on to Blue Water Crescent where you'll find all models. They are open by appointment only. For more information call Sunset Lakes Developments at 613-860-1100 or visit [www.sunsetlakes.ca](http://www.sunsetlakes.ca). ■

patricia.hitsman@sunmedia.ca



Coming this Fall!

"GREEN"  
Single Family  
Home Model



A premiere  
Kanata community



PHOENIX HOMES  
Building the Region's Finest Communities

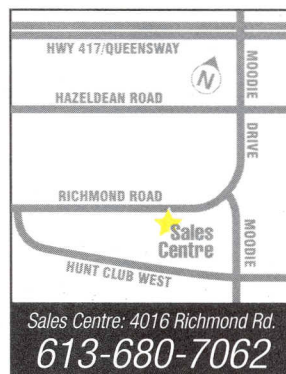
## Construction under way!

Imagine living "above it all" in a single family home or freehold townhome high atop a Kanata hilltop in a spectacular setting... See the exciting plans for **Heritage Hills**.

- Singles and Towns in a dramatic hilltop location
- Walk and shop in style at nearby Kanata Centrum!
- Exciting, innovative range of new home products
- Granite kitchen countertops in every home

Freehold Townhomes **\$275,900**

Single Family Homes **\$404,500**



Sales Centre: 4016 Richmond Rd.  
**613-680-7062**



E&OE

[www.phoenixhomes.ca](http://www.phoenixhomes.ca)